



CITY SCHASLIVE

RESIDENTIAL COMPLEX

LOCATED AT 12 LESI UKRAINKY STREET

SCHASLIVE, KYIV REGION,
UKRAINE


City State
ИСКУССТВО ВОПЛОЩЕНИЯ МЕЧТЫ


PRODIZ
ARCHITECTURE & DESIGN

DEVELOPER



City State, LLC

Ukraine, Kiev, 01013,
Stroyindustrii Str., 6

tel.: +38 (044) 594 91 84

fax: +38 (044) 545 75 15

info@citystate.com.ua

www.citystate.com.ua

GENERAL PLANNER



Prodiz, LLC

Ukraine, Kiev, 01013,
Stroyindustrii Str., 6

tel.: +38 (044) 379 34 39

fax: +38 (044) 545 75 20

a.davydenko@prodiz.com.ua

Technical and economics indexes	3
General location scheme	4
Location scheme	5
Master plan scheme	6
Typical apartments floor plans	7
General views	8

Technical and economics indexes

number	Name	Indexes	Notes
1	Land parcel area	2,44 ha	
2	Footprint area	6825 sq.m	
3	Wellness centre	2036,2 sq.m	
4	Underground parking	284 places	
5	Number of storeys	5 and mansard	
6	Number of apartments, including: - one bedroom - two bedrooms - three bedrooms	427 121 276 30	
7	Total building area	43359,84 sq.m	
8	including: - total apartments area - total commercial area - parking area - utility premises area	28785,37 sq.m 5212,52 sq.m 10979,12 sq.m 387,24 sq.m	

Kiev, Ukraine

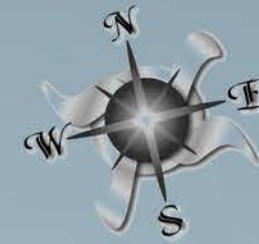
City Schaslyve

7 km

Borispol
International
Airport



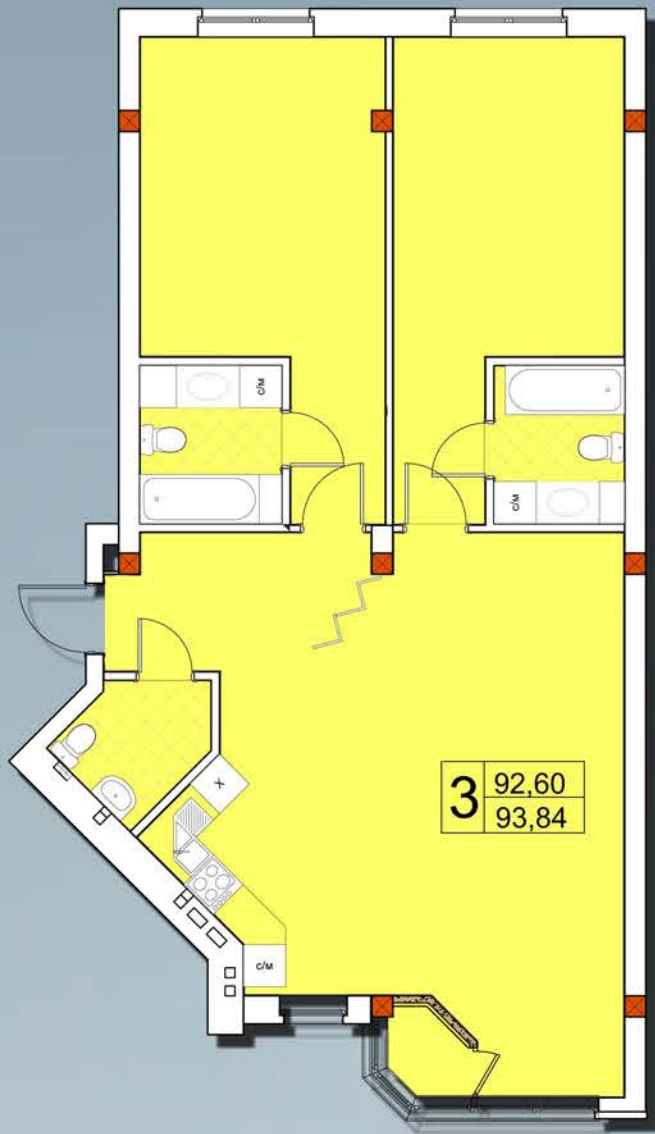




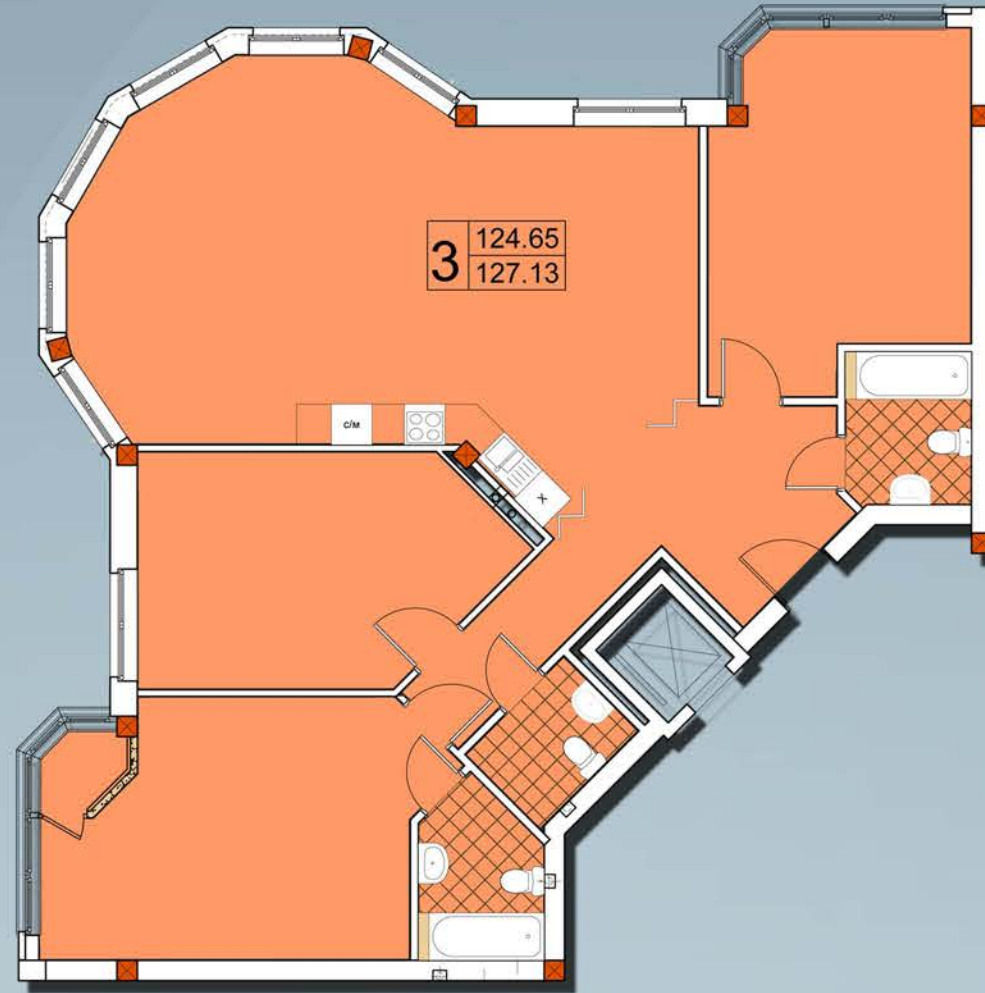
Explication:

1. Residential building №12;
2. Wellness centre;
3. Artesian wells;
4. Smoke removal pits;
5. Children's playground;
6. Basin with fountain;
7. Rest places.

three bedrooms apartment



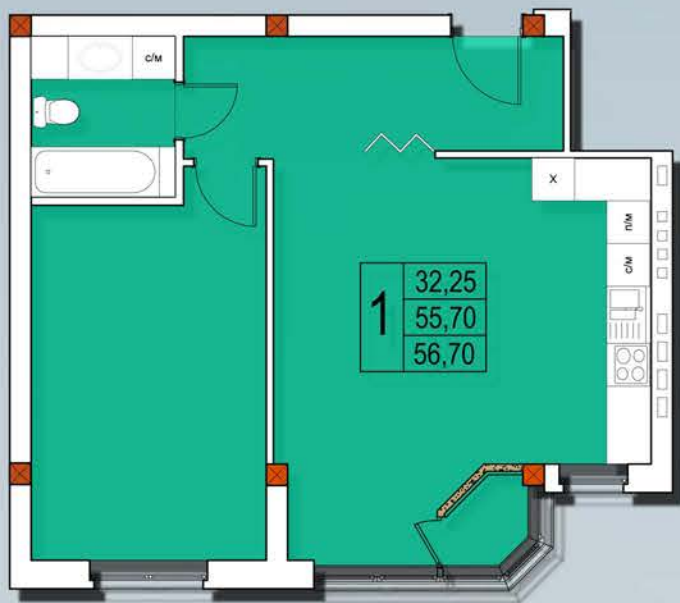
three bedrooms apartment



two bedrooms apartment



one bedroom apartment



one bedroom apartment



two bedrooms apartment

